

# Advanced RCR Program for Graduate Students (Additional Text)

---

Issued July. 2023

Research Ethics and Integrity Promotion Office ,  
Hiroshima University

(in cooperation with Writing Center , Hiroshima University)



HIROSHIMA UNIVERSITY



# Actual Case of Misconduct at Hiroshima University

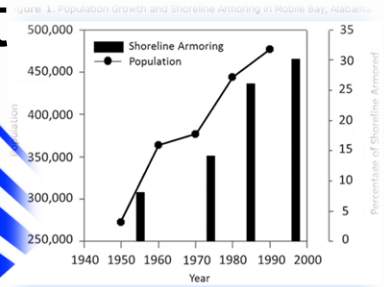
# Actual Case of Misconduct at Hiroshima University

- (1) Misconduct in Research Activities
- (2) Improper Use of Research Funds
- (3) Disciplinary Actions and Impacts

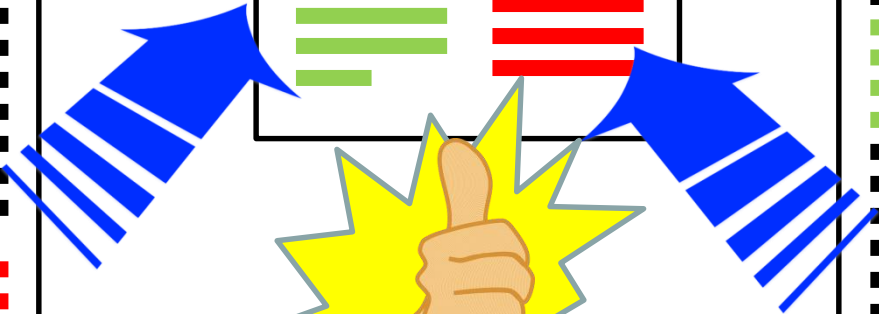
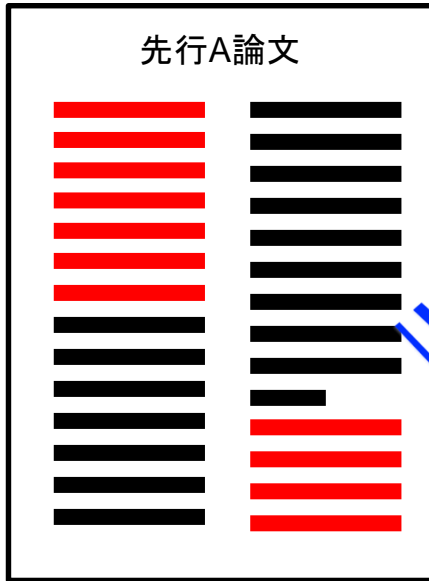
# Actual Case of Misconduct at Hiroshima University

## (1) Misconduct in Research Activities

“Patchwork papers” without quotations indicated



Adapted with permission from Douglass and Pickel 1999, this figure depicts the rate and extent of shoreline armoring in Mobile Bay. The vertical bars in the main graph show the proportion of armoring while the line depicts the



# Plagiarism (case 2)

(1) Misconduct in research activities

6

I didn't mean it.  
I just forgot to cite the quotations...  
And it was only a few places.

BUT



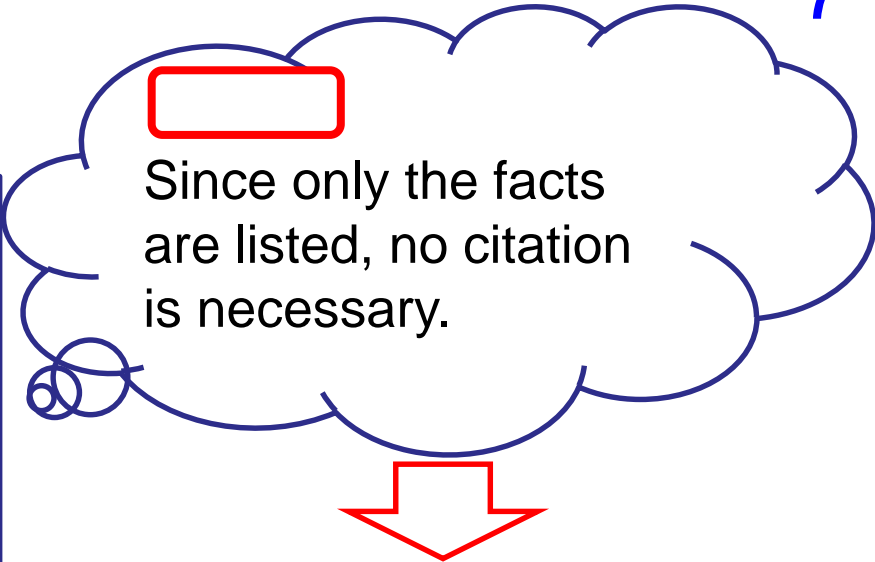
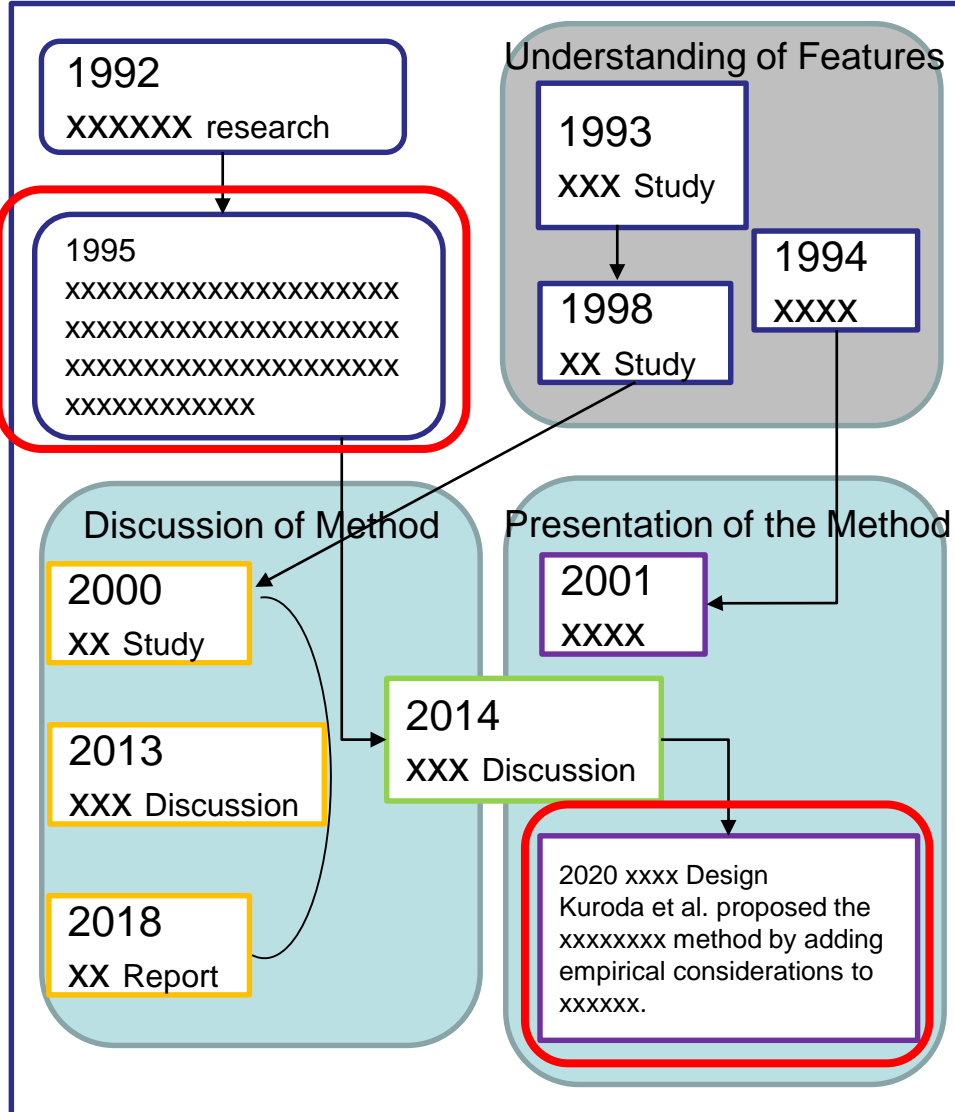
As a result of an investigation, several other incidences of negligence came to light, and the case was judged to be a “gross neglect in the basic **duty of care** expected to be exercised by researchers ,” and thus “**plagiarism.**”

# Plagiarism (case 3)

(1) Misconduct in research activities

## Review paper

Figure 1: Research Genealogy of 00 Research



**Because he failed to specify the citation, Plagiarism and Certification**

**The review article is original in that the author himself/herself has organized and categorized the previous studies and expressed them in the form of figures and tables.**

**For example, it is necessary to clarify the citation from the review paper even if it is a known fact.**

# Fabrication (at poster presentation : case 4) 8

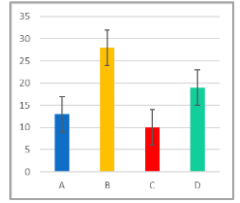
Former Assistant Professor A  
[ Lead speaker ]

## ① Graphs and images

For convenience, graphs and images that differed from the established conditions (drug administration period) were published

Have no data under the established conditions

Significant difference under other conditions



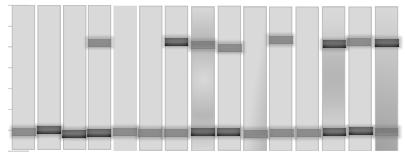
Published

Found to have been involved in fabrication

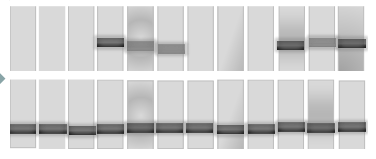
## ② PCR band diagram (mouse)

Digital images were cut and pasted to create the expected results

Digital images (original data)



Posted



Cut and pasted

Even though A discussed with Professor B (the responsible author) about how to correct the poster by the day before the poster presentation, no correction was actually made and the poster was presented as is.

Professor B  
[ Responsible author ]

Realized that the poster graph, images, and PCR band diagram had errors (but was unaware of the actual situation of ② were cut and pasted), and discussed how to correct the poster with Former Assistant Professor A by the day before the presentation. However, on the day of the presentation, B did not confirm whether the corrections had been made.

Although not found to have been involved in fabrication, Professor B was found be responsible for the poster presentation as research misconduct



## Causes of plagiarism

### (1) Misconduct in research activities

9

There is no need to cite a quotation if I change the text a little. This is my writing.

〇〇〇

I just submitted something that reviews and outlines existing research; it is not a thesis.

〇〇〇

It slipped my mind.

〇〇〇



There is no need to cite a quotation if I change the text a little. This is my writing.

Insufficient understanding of quotation (direct and indirect).  
No respect for existing research.

I just submitted something that reviews and outlines existing research; it is not a thesis.

Anything presented as a publication naturally involves responsibility on the part of the author.

It slipped my mind.

Great care should be taken not to neglect duty of care as a researcher. Depending on the circumstances, it can lead to serious problems.



Research misconduct is not only intentional.

Alarming, research misconduct can be committed accidentally as well.

For example,

“I didn’t know the Research methods” is not a valid reason.

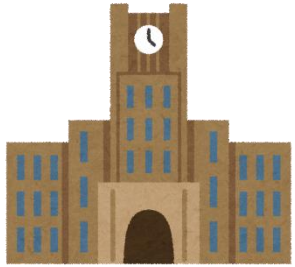
Depending on the circumstances, “carelessness” can also constitute research misconduct



# **Actual Case of Misconduct at Hiroshima University**

## **(2) Improper Use of Research Funds**

# Fictitious claims for honoraria



Hiroshima University



**STEP 2**

Report on payment of honoraria for fictitious work

**STEP 1**

Hiroshima University's Professor X

We'll say that you helped in the experiments, okay?

Hand the reward you're paid over to me

Okay, understood

Research group students



Hiroshima University's Professor X

Reward paid from the university to students

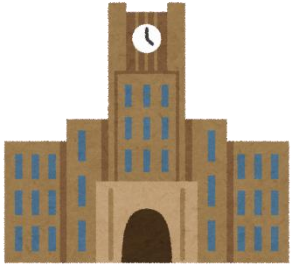
Research group students



Claim for honoraria for fictitious experimental assistance using the names of the students in the research group



# Double payment of travel expenses



Hiroshima University



A University

- Business trip report
- Hotel receipts
- Railway tickets, etc.

Business trip report only  
(A University does not require submission of hotel receipts, etc.)



Hiroshima University travel expenses



Hiroshima University's Professor X



A University travel expenses

Claim made to both universities for travel expenses for the same trip, and double payment received

# Actual Case of Misconduct at Hiroshima University

## (3) Disciplinary Actions and Impacts

# Penalties for research misconduct

## Hiroshima University Student Disciplinary Regulations

Fabrication, falsification, plagiarism

⇒ Expulsion or suspension

Improper use of research funds

⇒ Suspension or reprimand





# Previous examples of discipline for research semiconductor by faculty members at Hiroshima University ...

< Handout update >  
(April 2022)

An academic advisor published a journal article, using the ideas prepared by his/her graduate advisee for a presentation in a seminar, without obtaining the consent of the graduate student (plagiarism) + harassment

=> **Dismissal under instruction**

Most of a joint written paper published as the corresponding author was plagiarized from other papers

⇒ **Suspended**

Money paid for fictitious delivery notices/invoices was handled as “deposits” to a vendor. Discovered when the vendor was audited ⇒ **Suspended**

## Consequences of research misconduct other than punishment of individuals

Public disclosure of research misconduct  
Retraction of papers  
Repayment of research funds, etc.

Loss of public trust, not only for the individual in question, but also for the diversity

Implementation of diversity-wide measures to prevent recurrence

Increased burden for research activities

The impact of just one case of research misconduct on the diversity and other researchers is extremely severe



**Never commit  
research  
misconduct!!!**

# Contact for inquiries and reports

If you suspect research misconduct, you can contact the following:

## <Contact on campus>

<b>Fabrication</b>	<b>Chief Manager of Research and Academia-Government-Community Collaboration Research Support Group, Office of Research and Academia-Government-Community Collaboration, Hiroshima University</b>
<b>Falsification</b>	
<b>Plagiarism</b>	

- Address : 1-3-2 Kagamiyama, Higashi-Hiroshima City Hiroshima, 739-8511  
(1F, Administration Bureau Building)
- Direct phone number : (082)424-5679
- Fax : (082)424-5890
- Email : kokuhatsu@office.hiroshima-u.ac.jp

<b>Improper Use of Research Funds</b>	<b>Hiroshima University Audit Office</b>
---------------------------------------------------	------------------------------------------

- Address : 1-3-2 Kagamiyama, Higashi-Hiroshima City Hiroshima, 739-8511  
(6F, Administration Bureau Building)
- Direct phone number : (082)424-6068
- Fax : (082)424-4251
- Email : kansa-situcho@office.hiroshima-u.ac.jp

## <External contact>

<b>Fabrication</b>	<b>Sato Law Office ( Attorney : Takafumi Sato )</b>
<b>Falsification</b>	
<b>Plagiarism</b>	

<b>Improper Use of Research Funds</b>
---------------------------------------------------

- Address : 1-20 Teppo - cho , Naka - ku , Hiroshima City , 730 - 0017  
(6F , 3rd Ueno Building)
- Direct phone number : (082)227-1246
- Fax : (082)227-1690
- \*Call/visit time 9:30-12:00, 13:00-17:00  
(Closed on Saturday, Sunday, national holidays, Year-End and New Year holidays, and Obon holidays)

# Contact for inquires

21

Fabrication

Falsification

Plagiarism

**Chief Manager of Research and Academia-Government-Community Collaboration  
Research Support Group, Office of Research and Academia-Government-Community  
Collaboration, Hiroshima University**

- Address : 1-3-2 Kagamiyama, Higashi-Hiroshima City Hiroshima, 739-8511  
(1F, Administration Bureau Building)
- Direct phone number : (082) 424-5679
- Fax : (082) 424-5890
- Email : kokuhatsu@office.hiroshima-u.ac.jp

The following contact information is for inquiries regarding administrative procedures and rules for the use of research funds at Hiroshima University.

## <General Inquiries>

**Chief Manager of Research and Academia-Government-Community Collaboration  
Research Collaboration Group, Office of Research and Academia-Government-  
Community Collaboration, Hiroshima University**

- Address : 1-3-2 Kagamiyama, Higashi-Hiroshima City Hiroshima, 739-8511  
(2F, Administration Bureau Building)
- Direct phone number : (082) 424-4614
- Email : gakujutu-k-gl@office.hiroshima-u.ac.jp