



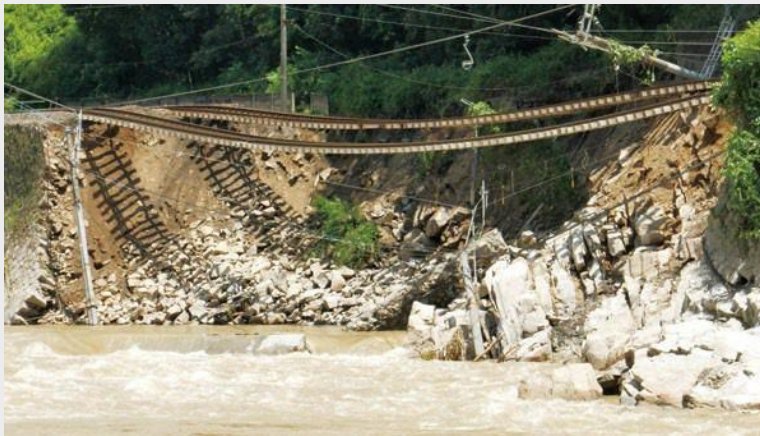
## 5-2. Readiness for Natural Disasters



## ○ Japan is so prone to natural disasters!

**International students need to take extra care for following natural disasters to save lives.**

- **Earthquakes(including Tsunami)**
- **Landslides and floods caused by torrential rain**



Damaged Railway by torrential rain  
in July, 2018  
in Higashiroshima city



Landslide by torrential rain in July,  
2018 near the Higashiroshima  
campus

**Natural disasters actually occurred in the neighboring areas**

(Photos provided by PRESSNET Co.,Ltd.)



# How to protect you from disasters... -Preparation Part 1-

Do it soon after arriving in Japan

For Free!

## 1 Check the hazard map around your house

- Floods
- Landslides
- Tsunami

○ Know **what disasters will be threatening** in your area  
○ Confirm **the location of evacuation shelters**

Higashihiroshima city

[Higashihiroshima city hazard map\(external link\)](#)

Hiroshima city

You can check the hazard map on Evacuation Guidance app “避難所へGo!” (can be installed from the QRs below)

Go to Evacuation shelter!

2

## Confirm the route to the evacuation shelters



iOS



Android

NHK provides information about disaster preparedness in multiple languages on their website.

NHK Website

[https://www3.nhk.or.jp/nhkworld/en/multilingual\\_links/en.html](https://www3.nhk.or.jp/nhkworld/en/multilingual_links/en.html)  
#disaster\_preparedness

NHK...Japan Broadcasting Corporation



# How to protect you from disasters... -Preparation Part 2-

## Do it soon after arriving in Japan

For Free!

3

Sing up for mail distribution service(For residents in Higashihiroshima)

### What is it?

You can get the related information quickly when the disaster is likely to happen or actually happens. (Higashi-Hiroshima City Disaster prevention info-mail service)

<https://www.city.higashihiroshima.lg.jp/en/11/34486.html>



### For residents in Hiroshima city

You can receive disaster related notifications through the app “避難所へGo!”



# When disasters actually happen...

1

## Collect information

Higashihiroshima city

Higashi-Hiroshima City  
Disaster prevention info-mail service

Hiroshima city

App "Go to Evacuation Shelter!" (避難所へGo!)

Class cancellation



○ You can get latest information on this website  
"DISASTER INFORMATION"  
(provided by the japan times)  
<https://disaster.japantimes.co.jp/>

2

## Consider evacuation depending on situations



(In the case of heavy rain) It may be better to move up to higher place, such as the upper floors of your apartment if evacuation itself seems dangerous, such as at night.

3

## Answer to a survey conducted by HU to report your safety



This survey can be answered after the situation has settled.

# Summary

Before

## 1. Understand the surrounding environments of residence

- [Hazard Map of Higashi Hiroshima](#)
- Evacuation Guidance app (Go to Evacuation shelter!)

- ! Grasp the geography around your residence
- ! Grasp the information about evacuation shelter near your residence

## 2. Collect information properly

- Higashi-Hiroshima City Disaster prevention info-mail service (Previous page)
- Evacuation Guidance app (Go to Evacuation shelter!)
- [Hiroshima Pref. Disaster Prevention Web](#)

After disaster happened

## 3. Consider evacuation depending on situations

To surely get evacuation information,  
Register for

- [Higashi-Hiroshima City Disaster prevention info-mail service](#)
- [Hiroshima City Evacuation Guidance app](#)

Evacuate when Evacuation level rise to level 4!

## 4. Answer to a survey conducted by HU

5	緊急安全確保	これまでの避難情報等
4	避難指示※2	災害発生情報 (発生も届出したときに発生)
3	高齢者等避難※3	+避難指示(緊急) +避難勧告
2	大雨・洪水・高潮注意報 (気象庁)	避難準備・ 高齢者等避難開始
1	早期注意情報 (気象庁)	大雨・洪水・高潮注意報 (気象庁)

Cited from the website of Cabinet Office