

Danger!

Pedal-Attached Motorized Bicycles



What's a Motorized Bicycle?

- A bicycle equipped with both pedals and a motor, which can be ridden using by motor alone.
- A bicycle with a driving aid that exceed assist ratio standards.



Motorized bicycles are classified like motorcycles or cars!

When riding a motorized bicycle, you must obey the same traffic rules as motorcycles and cars, even if you only use it with pedals. These include having a driver's license, not driving on the sidewalk, and wearing a helmet.



What you need before riding a motorized bicycle



A driver's license for motorcycles or cars



A brake light, rearview mirror, and blinkers.



A displayed license plate



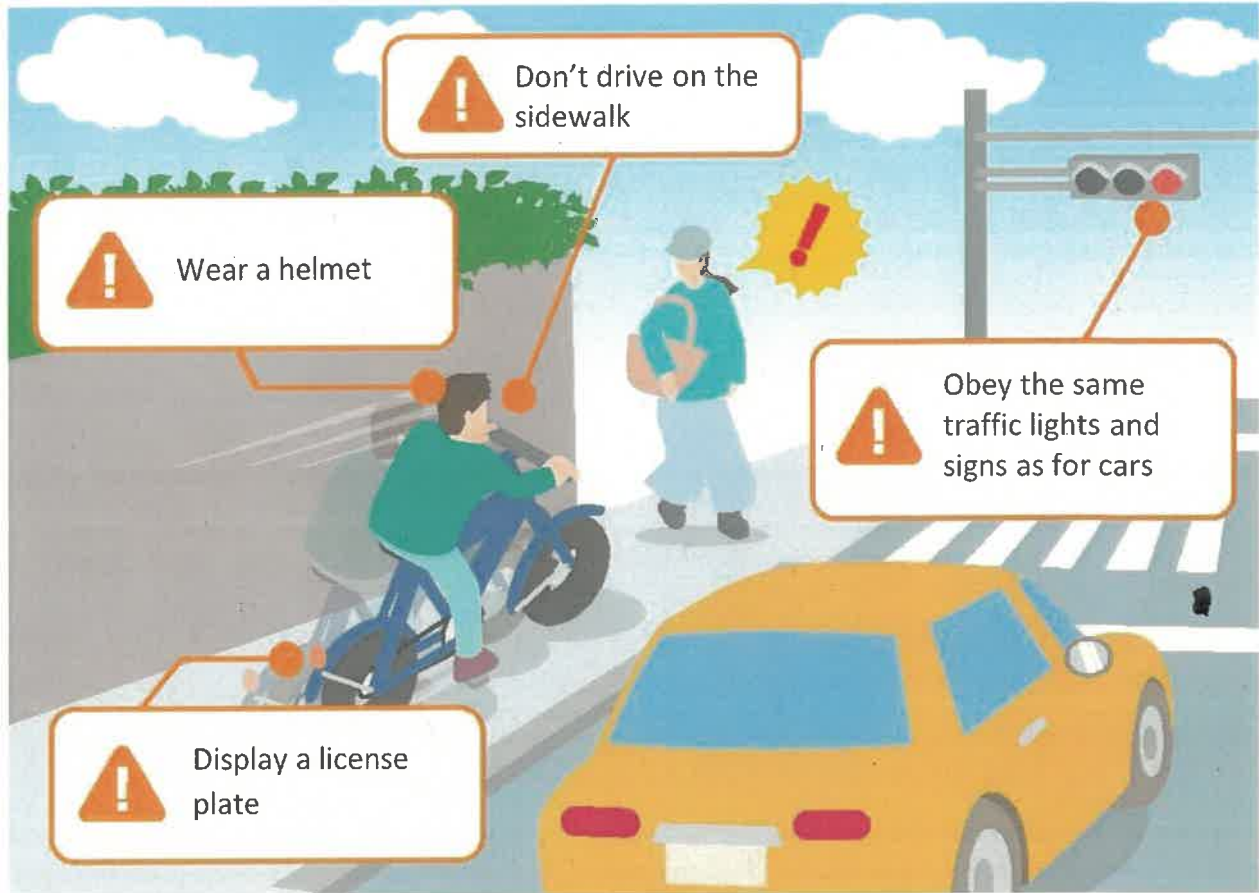
A compulsory automobile liability insurance



National Police Agency
Prefectural Police



Ignoring Traffic Laws is Illegal!



Officially Approved Motorized Bicycles

Bicycles with driving aids that are type-approved and bear the TS mark are subject to Bicycle Traffic Rules. If you want to use a motor-assisted bicycle, choose one with a TS mark!



TS Mark



Type-approved bicycle list

EAPCs are also known as "mopeds" in Japan.

Electrically Assisted Pedal Cycle (EAPC) Follow Traffic Rules



EAPCs are NOT "Bicycles"!

What is an Electrically Assisted Pedal Cycle (moped)?

A vehicle equipped with "pedals" and a "motor" that meets the following two criteria:

- equipped with a throttle and can be propelled only by the motor; and
- exceeds the standard assistance ratio for motor-assisted bicycles (electric bicycles).

EAPCs are NOT "Bicycles"!
An EAPC is a type of "general motorized bicycle" and "motor vehicle."

Even if you ride it by the "pedals only" without using a motor, the vehicle is still subject to the traffic rules for "general motorized bicycles" and "motor vehicles."

Check before riding!



The vehicle must have headlights, turn signals, and other safety accessories.



The vehicle must be covered by compulsory automobile liability insurance (mutual liability insurance).



Number plates must be displayed on the vehicle.

Be sure to follow the various other traffic rules.



To ride an EAPC, you must have a driver's license that allows you to ride a "general motorized bicycle" or drive a "motor vehicle."



EAPCs are not allowed on sidewalks. Ride on the roadway. Obey vehicle traffic signals.



Follow the traffic signs when riding the vehicle.



Be sure to wear a helmet.



Special Site
Hiroshima Prefectural
Police Website